



BEST EVER™

CUSTOM PADS & SADDLES

2022 CATALOG





*Celebrating
20 Years
in Business!*



Dear Friends,

It is our mission at Best Ever Pads to use our 40-plus years of experience to continue producing the highest quality, best-looking saddle pads on the Western market. It is also our goal to have the best customer service and public relations in the industry. It's hard to believe that we have been making pads for 20 years now. We are looking forward to making new acquaintances and continuing our relationships with current friends and customers. We hope to see you at a show, ranch or arena near you.

Ryan White
Tammy White

- Ryan & Tammy White

FOUNDERS, BEST EVER PADS



WHAT MAKES A BEST EVER PAD?

Only the Highest-Quality, Top-Rated Materials Make Their Way into Our Products

WITHER CUTOUT

Cutout over the withers provides better wither clearance and reduces spinal pressure. Also available as an open wither.

PAD MATERIAL

Best Ever Pads are soft yet durable, and require little to no break-in time. Made from 100% wool, these pads are excellent at moisture wicking to assist in heat removal. Wool pads offer the greatest compression protection: the denser the pad, the less it will compress under pressure. The high-quality, breathable materials allow our pads to be used alone or with a saddle blanket on top.

KUSH Pad with smooth black wear leathers and gold Best Ever Pads patch



WEAR LEATHERS

Best Ever Pads come in a wide range of top-grade wear leathers to protect against stirrup and cinch wear, as well as provide spine reinforcement.

PAD SIZES

Best Ever Pads are offered in several different sizes to suit you and your horse's specific needs (custom sizes available for the OG & Kush Collections):

- 25" x 25" (Pony)
- 28" x 28" (Small)
- 30" x 30" (Standard)
- 32" x 32" (Large)

PAD SHAPE

Best Ever Pads are specifically cut to allow the cinch to mold naturally around the horse's girth area, allowing for closer contact for the rider's legs.



CUSTOM MADE

Each pad is 100% handmade in the USA and made to order with custom designs, including brands, initials, logos, and events.



PROUDLY MADE IN THE USA



BEST EVER GIVES BACK

Join forces with the **Best Ever Gives Back** program. Every month we choose a nonprofit organization to give back to with the help of our loyal fan base. Watch for announcements on the Best Ever Pads website and social media.



CUSTOMIZE YOUR SADDLE PAD TODAY with our online Saddle Pad Configurator on www.BestEverPads.com



QUESTIONS ABOUT PRODUCT FIT? See the Best Ever Fitting Guide on pages 20-21 or go to www.BestEverPads.com





AMANDA WELSH

Best Ever Team Rider

"We love Best Ever Pads because they keep Firefly's back from getting sore, are great quality and we can create whatever style we like and then bring it to life!"



OG COLLECTION Wool Saddle Pads

Our **OG Collection Saddle Pad** has been the core of the company since 2002. This top-quality, 100% needle-punched wool pad is 112 ounces per square yard, making it firm, durable and breathable. This pad is dark gray in color, and comes in 1" and 3/4" thickness to best suit your needs.



Deep Purple Crocodile - Crown in Black/Violet Embroidery



Turquoise Floral - Gold Best Ever Patch

Red Floral - Crown in Black Embroidery

Turquoise Longhorn - Crown in Teal Embroidery



JADE CORKILL

Best Ever Team Rider

"I've liked all my Best Ever Pads, but without a doubt the Kush is the best pad ever."



KUSH COLLECTION Wool Saddle Pads

Our **Kush Collection Saddle Pad** is made from 100% high-quality, F11-grade washed and pressed wool that is 136 ounces per square yard. It is durable with a high resistance to compression, yet soft and flexible. Properties of this pad allow it to absorb moisture, which aids in removing heat from the horse's back. Light gray Kush is available in 1/2", 3/4", 1", and 1.25" thicknesses, while black, blue, red, turquoise, and purple Kush are available in 3/4" and 1".



Black Leather - Crown in White/Black Embroidery



Black Crocodile - Crown in White/Red Embroidery

Leopard Leather - Crown in Turquoise Embroidery

Black Smooth Leather



CEO COLLECTION

Specialty Build Saddle Pads

Specially engineered to add more shock absorption for your horse's comfort, the **CEO Collection** is comprised of a series of different buildup pads, each created to serve a specific purpose. Each pad is made from a wool base of our OG or Kush* Collection, then inserts and/or fleece are added to create the best-fitting combination for your horse. Constructed from the highest-quality materials, the entire CEO saddle pad collection can be customized to best meet your horse's needs.

**Kush buildups are not available with fleece.*

BUILDUP PADS OF THE CEO COLLECTION



- **BHS SERIES:** The BHS series features a 3/8" closed-cell foam insert. The BHS collection is ideal for horses with slightly above average withers to high withers, such as thoroughbreds or other more narrow-built performance horses. The additional support provided by the BHS pad helps with evenly distributing saddle pressure and spine relief. This collection is available in 1/2", 3/4", and 1" pads.



- **CADILLAC SERIES:** The Cadillac series includes the BHS 3/8" insert with an additional 1/4" closed cell foam insert placed over the shoulders. This series is designed for extremely high withered and senior horses with narrow and bony backs. This pad aids in comfort and keeps it from collapsing in areas behind your horses' shoulders by offering extra support. This collection is available in 1/2", 3/4", and 1" pads.



- **PRODIGY 1:** The Prodigy 1 features a fleece insert that is placed behind the shoulders. This insert is a great fit for horses with broad shoulders that have a space behind the shoulders where the saddle may get jammed. The fleece insert plays the role of providing just enough support that will help with opening up the shoulders and with even distribution of saddle pressure. This collection is available in 1/2", 3/4", and 1" pads.



- **PRODIGY 2:** The Prodigy 2 is a step up in support from the Prodigy 1. The Prodigy 2 features the BHS insert paired with the Prodigy fleece insert. This is a great option for slender horses that need more support throughout their back and that have a space behind their shoulders. This collection is available in 1/2", 3/4", and 1" pads.

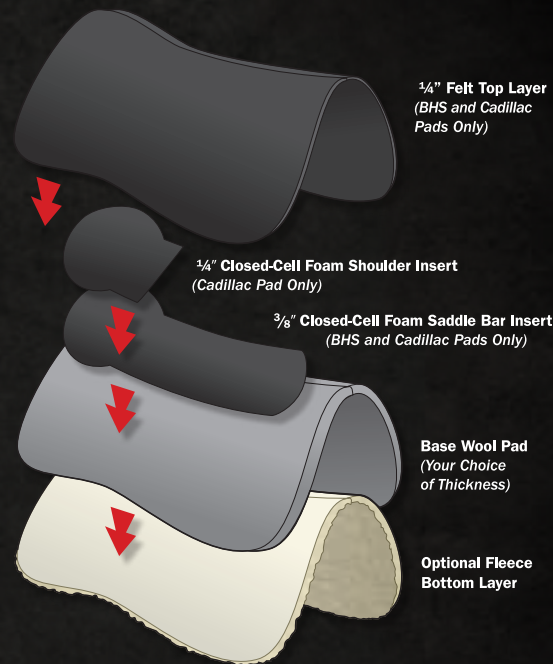


- **CHRONIC:** The Chronic insert is a full fleece insert that is placed along the bars of the pad. This insert works well for horses with kissing spine, a protruding spine, or chronic back pain. The fleece provides the additional support without being too structured. The fleece insert will conform to the horse's back and disperse to where it is needed the most. This collection is available in 1/2", 3/4", and 1" pads.



- **RISER:** The riser is a 1/4" thick closed-cell foam insert that is located 3" down from the spine along the bars of the pad and then up along the front. This insert plays the role of lifting the bars of the saddle up off of the horse's major muscles along the spine. This provides spinal and shoulder relief. This insert is great for horses with kissing spine, back muscle injuries, and horses that need help with freeing up their shoulders. This collection is available in 1/2", 3/4", and 1" pads.

LAYER OPTIONS FOR THE CEO COLLECTION



SHANE HANCHEY

Best Ever Team Rider

"The reason I love Best Ever Pads is pretty simple. The name speaks for itself. Ever since I have been riding Best Ever Pads my horses have been more solid than ever."



Cadillac Pad in Black Smooth Leather - Crown in Turquoise Embroidery

BEST EVER TEAM RIDERS RIDING CEO COLLECTION PADS:



BRADY MINOR



JADE CORKILL



RILEY MINOR



TRAVIS GRAVES



WESLEY THORP



QUESTIONS ABOUT PRODUCT FIT? See the Best Ever Fitting Guide on pages 20-21 or go to www.BestEverPads.com



CUSTOMIZE YOUR SADDLE PAD TODAY with our online Saddle Pad Configurator on www.BestEverPads.com





NELLIE MILLER

Best Ever Team Rider

"Sister gives me her best every day, so naturally I want to have the best possible pad underneath her saddle. With the high quality materials and the manufacturing done in the USA, it truly sets Best Ever pads apart from the rest."



FLEESAR *Fleece Saddle Pads*

The **Fleesar Saddle Pad** adds a fleece lining to create an especially soft feel for added comfort, shock absorption, and great moisture-wicking ability to keep your horse cool. This fleece-lined saddle pad is a great pad for horses where their current pad is rubbing or if they have thin or sensitive skin. It is available to be paired with our OG or Kush wool, and is available in 1/2", 3/4", or 1" base pads.



Black Crocodile – Crown in White/Maroon Embroidery



ANDY HOLCOMB

Best Ever Team Rider

"Fit and function is what I like about Best Ever Pads– I use them every day and they hold up to the every day abuse."



BEST IN SHOW *Saddle Blankets*

Stand out in the **Best in Show Pad**! Choose from a variety of colorful and patterned saddle blanket tops ranging in size from 32x32", 34x36", or 34x38". This stylish option is a showstopper in and out of the arena. It can be paired with any of our pad collections to create an all-in-one saddle pad that moves together in unison.



Black Crocodile – Crown in White/Turquoise Embroidery



Black Leather – Crown in White Embroidery

Black Leather – Crown in Hot Pink Embroidery

Black Leather – Initials in Light Pink Embroidery



COWBOY



Burgundy Oiled – Crown Lasered



Saddle Tan Roughout



Light Brown Roughout



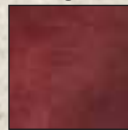
Chocolate Roughout



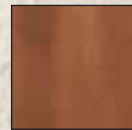
Buckskin Roughout



Oiled Espresso



Oiled Burgundy

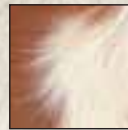


Oiled Yukon

COWHIDE



Black Speckle Cowhide – Crown in Purple/Turquoise Embroidery – Turquoise Buck Stitch



Red Paint



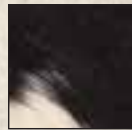
Zebra



Leopard



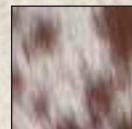
Black Speckle



Black Paint



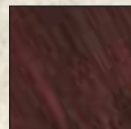
Brown Speckle



Red Speckle



Gray Brindle



Brindle



Brown Paint

CROCODILE



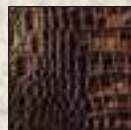
Black Crocodile – Crown in White/Red Embroidery



Deep Purple



Black



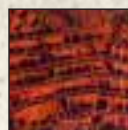
Brown



Canary



Copper Brown



Flame



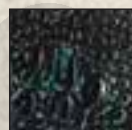
Flamingo



Gray



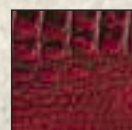
Ivory Chocolate



Lagoon



Purple Gold



Red



Sea Turquoise

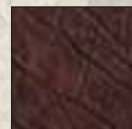
ELEPHANT



Black Elephant – Crown in White/Black Embroidery with White Crystal Tips – White Crystals/Silver Spots



Black



Chocolate



Graphite



Pink



Purple



Turquoise



Vintage Peat

FLORAL



Pink Champagne Floral – Crown in White Embroidery



Black



Chocolate



Copper Chocolate



Indios



Ivory Chocolate



Pink Champagne



Red



Silver Grey

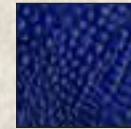


Turquoise

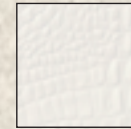
REPTILE



White Gator – Crown in Light Turquoise/Blue Embroidery – Blue Buck Stitch



Blue Gator



White Gator

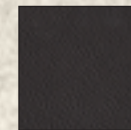


Cream Gold Python

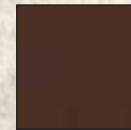
SMOOTH



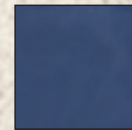
Blue Smooth Leather – Crown in Thin Blue Line Embroidery



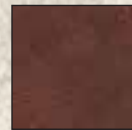
Black



Brown



Blue



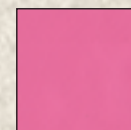
Oak Nut



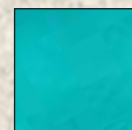
Green



Purple



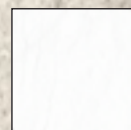
Pink



Turquoise



Red



White

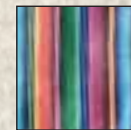
WESTERN



Serape Sedona – Crown in Black/Teal Embroidery



Serape Sedona



Serape Sunny



Serape Traditional



Laredo Turquoise



Laredo Sepia



Camo



Turquoise Longhorn



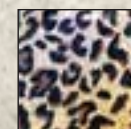
Sepia Longhorn



Navajo Santa Fe



Navajo Turquoise



Leopard



Fall Leaf Feathers



Jade Bronze Feathers

BE UNIQUE. BE BOLD. **BE YOUR BEST EVER.**



BEST EVER PATCH



COLOR OPTIONS



CROWN EMBROIDERY

Choose from our specialty or fully-customizable crown embroidery options online!



SPECIALTY CROWNS



CUSTOM EMBROIDERY

Stand out with custom embroidery of your own designs: names, initials, brands, and business logos.



TOOLED

Custom hand-tooled wear leathers (10-12 weeks for production)



LASER

Send us your design to be laser burnt on our heavy duty cowboy collection leathers.



CRYSTALS

This line of completely mounted, acrylic-faceted nail head rhinestones will add pop to any pad. Applied in conjunction with spots (see options below).



SPOTS

Create a unique design that sets your pad apart with round head spots, for use as corner piece embellishments. Can be applied alone or in conjunction with crystal options above.



FRINGE BORDER

Add flair to any pad with a colorful suede fringe. Offered in a variety of colors, and available as corner only or full fringe.



BUCKSTITCH BORDER

Buckstitching is a heavy thread pattern that will border your entire wear leather and corner piece. Offered in a variety of colors.





BEST EVER CUSTOM SADDLES
CUSTOMIZATION EXAMPLE

STEP 1

- A. Choose Type of Saddle and Model Number
ex. Team Roper TR300
- B. Choose Seat Size
ex. 15"
- A. Choose Gullet Desired
ex. Full quarter horse

STEP 2

- Choose Tooling Degree
ex. 1/2 tooled

STEP 3

- Choose Tooling Pattern (Border, Floral, Stamp)
ex. Caddo Rose with Braid Border

STEP 4

- A. Choose Leather Texture
ex. Roughout
- B. Choose Skirt Lining
ex. Genuine Wool Skin

STEP 5

- Choose Leather Options
ex. Natural Leather - Vintage Finish

STEP 6

- Choose Cantle
ex. Leather Overlay Rawhide Silverlace

STEP 7

- Choose Stirrups
ex. 3" Deep Roper

STEP 8

- Choose Conchos
ex. Upgrade CN09

STEP 9

- A. Choose Seat Style
ex. Full Seat
- B. Choose Sewing Options
ex. Machine Sewn
- A. Choose Seat Materials
ex. Printed Suede Chocolate

STEP 10

- Choose Additional Upgrade Options
ex. Rope Strap

BEST EVER Custom Saddles

Best Ever Custom Saddles are handmade, hand cut, hand tooled, and hand finished to produce a true custom saddle using the finest of materials. They are made with Hermann Oak Leather tanned in the USA, stainless steel hardware, and saddle trees that offer the best fit and function. Saddle trees come with a 10-year warranty. Upgraded saddle trees are available with a lifetime warranty. All saddle trees have been tested, ridden, and modified to ensure the best available fit. All saddles are made to order through www.BestEverPads.com, where you can view a wide range of options for 12 different saddle styles. Production time is approximately 10 months.





AWARD THE *Best* PADS

Make your event one to remember when you give away custom Best Ever Pads! Our pads are the perfect award for any type of event from roping to barrel racing. The sky is the limit when it comes to customizing your award pads. Embroidery is also available for custom business logos, event names, division placings and more! We are here to answer your award pad questions! Give us a call today to start your order, or find out more about our awards program!



BEST EVER *Trophy Saddles*

Best Ever Custom Saddles offers a quality award line that will meet any budget. We know what it takes to build quality tack that any winner will be proud to ride. Please call or email for details on bids and ordering assistance.



BEST EVER TEAM RIDERS



BE UNIQUE. BE BOLD. **BE YOUR BEST EVER.**



PRO TEAM

WE ARE PROUD TO SPONSOR SOME OF THE BEST ATHLETES IN THE RODEO AND PERFORMANCE HORSE INDUSTRIES.



ANDY HOLCOMB

BRADY MINOR

BRITTNEY BARNETT

BROCK HANSON

CESAR DE LA CRUZ



CODY COWDEN

CODY SNOW

CORY PETSKA

DANYELLE CAMPBELL

HAVEN MEGED

HUNTER KOCH

JACOB TALLEY

JADE CORKILL

JAKE MINOR



JORDAN KETSCHER

JR. DEES

KATHY GRIMES

KOLTON SCHMIDT

LANCE GRAVES

LEVI LORD

NELLIE MILLER

NICK GUY

PHILLIP RALLS



RHEN RICHARD

RILEY DUVALL

RILEY MINOR

SHANE HANCHEY

SPENCER MITCHELL

TAMMY WHITE

TRAVIS GRAVES

WALT WOODARD

WESLEY THORP



PAD FITTING FOR AVERAGE HORSE BUILD WITH WELL-FITTING SADDLE

(Assuming you are not riding a saddle blanket with your pad)

DISCIPLINE-FOCUSED SUGGESTIONS:

- **Trail Riding:** 1" Kush or ¾" Kush/OG Fleesar
- **Barrel Racing:** ¾" Kush/OG, ½" Kush Fleesar
- **Team Roping:** 1" Kush Fleesar or 1.25" Kush
- **Ranching/Cowboying:** 1" or 1.25" Kush. You may consider a Best in Show pad if you often struggle with the skirt of your saddle being too big on your pads.
- **Steer Wrestling:** 1.25" Kush or 1" Kush Fleesar
- **Calf Roping:** 1" Kush/OG, 1" Kush/OG Fleesar, ¾" Kush Fleesar
- **Colt Starting:** ¾" or 1" Kush/OG

PAD FITTING FOR AVERAGE BREED BUILD

(Assuming you are not riding a saddle blanket with your pad)

BREED-FOCUSED SUGGESTIONS:

- **Quarter Horse (wide build):** 1" OG/Kush Fleesar, ¾" OG/ Kush Fleesar
- **Thoroughbred (narrow build):** 1.25" Kush, ¾" BHS Fleece, or 1" BHS Kush Wool
- **Mustang (round):** ½" Kush Fleesar, or ¾" Kush/OG
- **Tennessee Walker/Gaited:** ½" Kush Fleesar with deep contour or ¾" Kush/OG with deep contour
- **Draft Horse:** ¾" Kush/OG with Fleece or 1" Kush/OG
- **Pony:** ¾" Kush/OG (round back ponies) or 1" Kush/OG (ponies with average backs)

PAD FITTING FOR HORSE CONFIRMATION

(Thickness of suggested pad will vary based on discipline and saddle fit)

- **Shark Fin / Camel Fin (withers that thrust noticeably from the topline with an accompanying dip):** BHS Fleece with deep contour or Cadillac Fleece with deep contour
- **Hollow Spots (broad shoulders with a narrow spot behind the shoulders and a wide back):** Cadillac Fleece

with deep contour, Prodigy Fleece with deep contour, or BHS Fleece with deep contour.

- **Downhill Build (withers are lower than the croup):** BHS Fleece with deep contour or Cadillac Fleece with deep contour for a narrow horse. Cadillac (shoulder insert only) with deep contour for a narrow horse.
- **Broad Shoulders:** The horse's shoulder must be allowed a complete range of motion. Should have a wider tree saddle – ½" Fleesar or ¾" Fleesar depending on discipline.
- **High/Narrow Wither (when the ridge between the shoulder blades that connects the neck and the back is taller than average):** BHS with or without fleece
- **No Wither (round/mutton):** ½" Fleesar or ¾" Fleesar depending on discipline

PAD FITTING FOR DIFFERENT ISSUES

(Thickness of suggested pad will vary based on discipline and saddle fit)

PHYSICAL ISSUES

- **Kissing Spine (occurs when vertebrae in the spine are too close together or touching):** Chronic or Riser pad – thickness depends on discipline.
- **Protruding Spine (likely to be due to lack of topline and muscle):** Riser Fleece, BHS Fleece, Chronic Fleece
- **Atrophy (muscle atrophy also occurs when an unbalanced saddle puts too much pressure on a particular muscle. Under the point of pressure, the muscle will 'undevelop' or atrophy):** Muscle atrophy should be treated on a case-by-case basis. Please consult with our pad fitting specialist (call or text the Best Ever Pads office at 805-528-8009 or email info@besteverpads.com).
- **Sway Back / Dropped back (Lordosis, commonly known as "swayback", is the weakening of a horse's supporting ligaments along the spine. Many different causing factors can lead to swayback such as genetics, age, conformation, pregnancy, excessive strain on the back and/or a lack of exercise):** BHS Fleece, Prodigy Fleece, Chronic

SADDLE FITTING ISSUES

- **Large Dry Spots:** A smooth dry spot that is slightly larger than the palm of your hand is not harmful.
- **Small Dry Spots:** Small, ruffled hair/white spot is caused by concentrating the pressure too much in one spot. White hair is caused by blood circulation to the hair follicles being cut off from pressure which leads to the death of the hair follicle. This can be a sign that the saddle does not have the proper fit but can also mean that you need a thinner pad with deep contour.
- **Rolling:** Too much padding negates a good fit between the shape of the horse and the saddle tree by diminishing the curves. It causes the saddle to roll around more so the cinch needs to be tighter to hold it in place. *Suggestion:* A thinner pad with deep contour.
- **Slipping Backward:** Saddles that are too narrow or have too much padding built up in the front are prone to sliding back, resulting in an improper placement on the back. *Suggestion:* A thinner pad with deep contour.
- **Slipping Forward:** Saddles that are much too wide without proper corrective padding may slide forward and onto the withers. *Suggestion:* Depending on the build of the horse, a BHS, Prodigy, or Cadillac.
- **Saddle Sits Low:** If the pommel sits down lower than two fingers height from the withers, the saddle will more than likely be tipped forward out of balance. The saddle may also be too wide for the horse. *Suggestion:* BHS, Cadillac, or Riser with deep contour.
- **Saddle Pinching:** A saddle that is too narrow, or with a too-narrow gullet, will pinch and put pressure along the sides of your horse's spine. *Suggestion:* Riser or BHS with deep contour.
- **Saddle Bridging:** When the bars of the saddle are sitting above the horse's back rather than fitting closely and the majority of the saddle pressure is over the withers and lower back. *Suggestion:* A Prodigy or Chronic.
- **Loin Rubbing:** Ruffled hair over the horse's loins (lower back). *Suggestion:* May need a longer pad and should consider either a fleece and/or deep contour.
- **Rub Marks on Horse's Side:** Check your Blevins buckles first to ensure that the leather hasn't worn away causing the metal to rub your horse's hair off. If the Blevins buckles are fine, you may need a longer pad or straight leg option.
- **Rubbing (Miscellaneous):** Run your hand under your saddle to check for any nails or hard spots. Saddles do need to have the fleece lining replaced on occasion.

SADDLE FITTING TIPS

- **6 ½" Gullet with Quarter Horse Bars:** Best for a horse with narrower withers. Example would be an Arabian bred or thoroughbred with more of a wither to them than your quarter horse breeds.
- **6 ¾" Gullet with Full Quarter Horse Bars:** Fits a wide variety of your standard horses today.
- **7" Gullet with Full Quarter Horse Bars:** Fits your mutton withered or round backed horses that have barely any rise in their withers.

QUICK SADDLING TIPS

- **"Cupping" Your Pad:** The best way to do this is to put your pad on a little bit forward on your horse's back and put your saddle on. From this point, shimmy your saddle a little bit to help it settle into place. Then use your hand to lift the front of your pad up by the gullet-hole giving it a tent-like shape over your horse's withers. This does not need to be drastic but just enough to increase air flow down your horse's spine and to allow the saddle to fit more flush with your horse's back.
- **Determining What Size Pad to Get:** To determine the best size for your horse, measure the length of your saddle and add 2-3" to that length. Once under the saddle, your pad should show about 1-1.5" of pad in the front and back of the saddle.

BEST EVER CUSTOM SADDLE PADS GUARANTEE

If you have further saddle pad or saddle fitting questions, please take advantage of our free saddle pad consultation. This process is where we help you decide on the best fit for you and your horse. Send side pictures of your horse saddled AND unsaddled to 805-234-5836 (text) or info@besteverpads.com.

We want you to be completely satisfied with your purchase at Best Ever Custom Saddle Pads. Customers, with receipt, have 90 days to return items for a full refund minus shipping costs. We do not issue refunds on customized logos or brand names, therefore, make sure you have the correct information submitted before ordering. Customers with no receipt may exchange unused items for other merchandise of equal or lesser value.





DESIGN
YOUR BEST EVER PAD
Online!

www.BestEverPads.com

View Our Entire Line of Products Using Our
Online Saddle Pad Configurator Today!

DEALER *Locator*

Looking for a Best Ever Pads dealer near you? Head on over to our website www.BestEverPads.com to find our Dealer Locator. Enter your zip or postal code to find an authorized distributor near you. **Best Ever Pads** dealers can be found across the USA and areas of Canada, Mexico, and Italy!



BEST EVER TEAM GEAR

BEST EVER TEAM GEAR

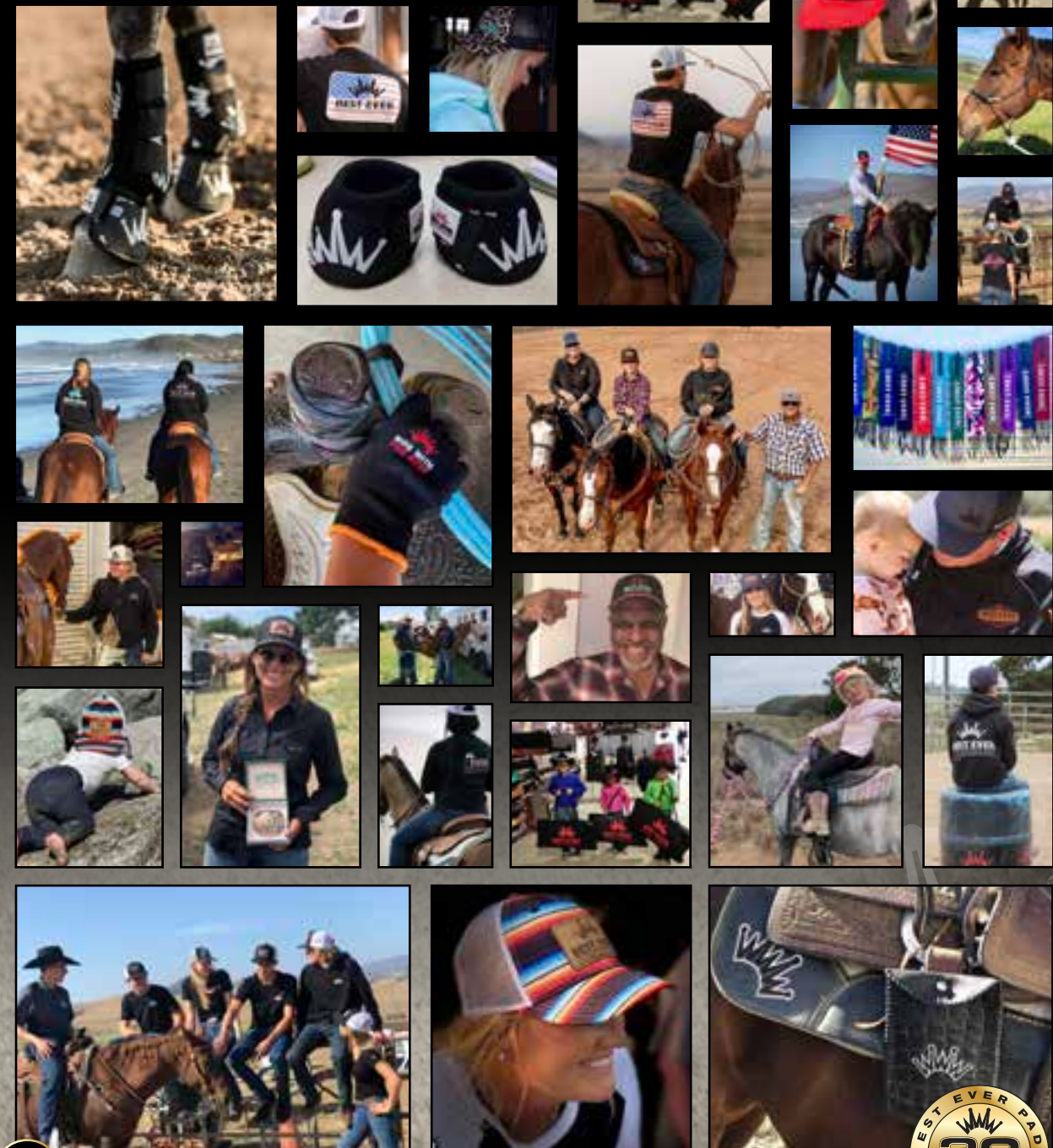
Ride with the Best!

The latest **Best Ever Team Gear**— including hats, tees, sweatshirts, tack accessories, and more— can be found at www.BestEverPads.com.



Tag Us On Instagram!

@besteverpads #besteverpads





2445 Paradise Lane
Los Osos, CA 93402
info@besteverpads.com
Call: 805-528-8009
Text: 805-234-5836
www.BestEverPads.com

BE UNIQUE.
BE BOLD.
**BE YOUR
BEST EVER.**

